

Designing and presenting an environmental management model with an emphasis on energy management in office buildings (Case study: District 5 Municipality of Tehran, Iran)

Maryam Ganjineh, Farzam Babaei Semiromi*, Ali Mohammadi, Seyed Alireza Mirzahosseini, Mohammad Reza Tabesh

Department of Environmental Management, Faculty of Natural Resources and Environment, Science and Research Branch, Islamic Azad University, Tehran, Iran.

*Corresponding author: farzam.babaie@gmail.com

Original Research

Abstract:

Received:
20 April 2024

Revised:
6 May 2024

Accepted:
7 May 2024

Published online:
25 June 2024

© The Author(s) 2024

The present applied research aimed to model energy management in office buildings of District 5 Municipality of Tehran, Iran. The components affecting energy consumption were extracted via an integrated approach (including in-depth survey and semi-structured interviews with experts) using coding method and prioritized by Analytic hierarchy process and Expert Choice. The proposed model was fitted by structural equation modeling and the strategies were developed by Hitt's strategic planning model. The results showed 10 components (in three dimensions) as effective factors in energy management. The highest and lowest weight percentages were respectively related to the components of "Using appropriate technology for manufacture and providing and using low-consumption supplies and equipment" (26.8%), and "Implementing green tax policy" (1.7%). Goodness of fit index values for the three domains of the integrated model were 0.942 (for architecture and engineering), 0.941 (for behavioral patterns) and 0.901 (for rules and regulations), which were in the acceptable area due to being more than the standard value (0.9), as well as the root mean square residual values were 0.079, 0.073 and 0.061, respectively, which were in the acceptable area due to being lower than the standard value (0.08). The strategies of "Strengthening the infrastructure and equipment in the field of energy consumption optimization" and "Using green tax and incentive solutions in energy consumption" were placed in the first and last priorities with final weights of 4.16 and 3.156. These findings were a claim for the good and acceptable fit of the proposed 10-component and 9- strategy model.

Keywords: Energy management; Office buildings; Environmental management model; District 5 Municipality of Tehran

1. Introduction

The overconsumption of energy in the last century and the increase in energy demand around the world in recent years have incurred irreparable adverse effects on the environment, such as global warming, pollution of water resources, and the extinction of some animal and plant species. These bottlenecks, along with other challenges such as energy economy and unsafe energy carriers, have raised the issue

of sustainable development and paved the way for their development based on sustainability criteria (Darabi, 2022). According to forecasts, global energy consumption will increase by nearly 48 % in 2040 compared to the same amount in 2012, and Asia will still be the largest energy consumer in 2040. Meanwhile, over 50 % of global energy will be consumed in the industry sector (Mariano-Hernandez et al., 2020). Energy consumption in Iran has been reported to be more

than 2.5 times the average annual global energy consumption. The energy intensity index in Iran is estimated at 0.63 %, and subsequently, Russia (0.53 %) and Saudi Arabia (0.51 %) have occupied the next positions, respectively. According to the latest statistics, Iran is known as the ninth energy consumer in the world, and such energy consumption means 3.4 million barrels of crude oil (Hesami, 2020). Improving urban energy efficiency not only helps save energy, but also leads to the development of cities' budgets, improved services and increased competition in this field (*Translation of the Document of Paris Sustainable Development Goals.*, 2019; Javadi Nodeh et al., 2021). Since a large part of electricity in Iran is produced by thermal power plants, high consumption of electrical energy means high consumption of non-renewable fossil fuels. Electricity consumption of buildings in Iran has doubled in the last 10 years. According to the statistical data of the Ministry of Energy, per capita energy consumption in Iran is three times that of industrialized countries, and a large part of this difference is caused by energy losses in the construction sector (Bahrami and Davoudi, 2004). The survey of per capita energy consumption in Iran between 2004 and 2011 shows a 25% increase in these years; the per capita energy consumption in Iran is estimated to be more than 5 times that of Indonesia (with a population of 225 million), 2 times that of China (with a population of 1.3 billion), and 4 times that of India (with a population of 1.122 billion (Bahmanpour et al., 2021).

Considering the limited energy resources in Iran and taking into account the national approach to reduce dependence on oil resources, the need to reduce energy consumption in various sectors of industry and construction is considered as the first candidate in the field of attention to energy saving solutions (Ghafari Jabari et al., 2013). Among the environmental challenges in urban management that must be planned and managed in an integrated and systematic manner (Fataei and Alsheikh, 2009; Nami et al., 2017), reducing the high costs of energy consumption in buildings and especially office ones, paying attention to preserving the environment and reducing environmental problems are among the concerns that are receiving more attention every day. Environmental management of energy in buildings is a creative and cost-effective solution to achieve environmentally friendly buildings (Pallante et al., 2020). The building sector accounts for more than a third of energy consumption, with an annual value of over six billion dollars. The vast majority of buildings in Iran lack technical standards set to prevent the loss of cooling or heating energy (Tatar and Marafet, 2013). Public buildings account for 70 % of energy consumption in this sector, and old buildings generally show between 40 and 60 % of energy loss. According to the balance of electrical energy consumption in an office building in Iran, cooling and air conditioning accounted for the largest share (40 %) of this type of consumption, followed by lighting (25 %), heating and hot water consumption (19 %) and other electrical appliances (15 %). Following the implementation of comprehensive plans in the field of optimizing energy consumption, including the formulation of executive guidelines for "optimizing the consumption of

energy resources (water, electricity and gas) in the buildings of the municipality of Tehran, Iran", it has been tried to avoid energy waste, reduce economic costs and improve the quality of the urban environment (Verij Kazemi and Verij Kazemi, 2017).

Tehran Municipality has been one of the leading organizations in optimizing energy consumption in buildings under its authority. Currently, the main challenge of energy management in the buildings of Tehran Municipality is the existence of over 1000 office buildings in an area of about 1000 hectares and high consumption of energy resources. In these spaces, more than 60,000 people are consuming energy daily during the peak hours of energy consumption (from 7:00 am to 5:00 pm) without any specific instructions, although there is no specific database in this field. Hence, the preparation of a data bank with specific indicators of energy resource consumption and their monitoring is considered as one of the information gaps in Tehran municipality. Almost more than 50% of the total national energy is consumed in the building sector, whether in the domestic sector, in the office sector, in the commercial sector or in the industrial sector. At the same time, more than 40% of Iran's buildings deviate from international standards. Article 19 (Energy Saving) of the National Building Regulations of Iran, which is the most basic issue of energy efficiency in the building sector, has been announced for more than 5 years, but has not yet been fully implemented and is not a major concern for the Ministry of Roads and Urban Development. In fact, the economic parameters are so influential in the housing sector in which the field of energy efficiency disappears (Fazli and Heydari, 2013).

Energy Management refers to the regulation and optimization of the use of energy systems, which include engineering, control and managerial methods (Samavati, 2016). Energy management should be connected to the organization's operational goals, not moving in a separate path (Shaban-zadeh and Javan, 2003). In this regard, building energy index (BEI) is defined as total energy of electricity consumed by the building (kWh/m²/yr). Energy Consumption Optimization refers to the selection of patterns and implementation of energy consumption policies, which are desirable in terms of the national economy, guarantee the continuity and durability of energy, promote life indicators, reduce costs, and predispose the expansion of justice in society. In this framework, it is considered to use the most efficient way of using resources, which implies reducing the destruction of energy resources and also reducing the adverse effects of improper use of energy on the environment (Tatar and Marafet, 2013).

In recent years, there have been many studies on optimizing energy consumption in Iran. In this context, Hesami (2020) explained the effectiveness of the implementation of the resolution to reform the pattern of energy and resource consumption in Tehran municipality buildings. The results of this study showed that the implementation of the mentioned plan reduced the consumption of energy and resources in two years (2018-2019). The project led to a 3% reduction in water consumption, 9% in electricity consumption and 5% in gas consumption per capita. In applied research,

Moharami et al. (2016) used some indicators to manage energy and environmental safety to present several projects in the field of smart buildings, energy efficiency and safety in sustainable development. Their hypotheses were aimed at preventing the harms that humans were not able to deal with due to mental preoccupations, lack of opportunity or human errors, thereby resulting in unwanted accidents. Khadivi et al. (2016) identified seven indicators affecting energy consumption in a 15-story high-rise office building in Tehran equipped with an energy management system and used Design Builder software to simulate the available data. The results showed that saving the energy of cooling and heating devices could reduce the annual energy consumption by 35-40%. In a study on smart buildings as an effective choice in energy efficiency through library studies, Nikghadam Hojjati et al. (2012) stated that Iran has the highest intensity of energy consumption in the world, with the highest amount (around 40%) in the non-productive sectors. Verij Kazemi and Verij Kazemi (2017) investigated the social inhibiting factors of energy consumption efficiency in office buildings in Iran. Samavati (2016) investigated the energy management of smart buildings with renewable energy sources and found that their proposed energy management algorithm saved about 28% of the electricity cost of buildings.

Salvia et al. (2021) investigated ways to promote policy making to improve energy efficiency in municipal public buildings. In this research, they focused on public policy making in the field of energy management. Their results indicated that technical, engineering and managerial aspects should be used in an integrated manner. Mariano-Hernandez et al. (2020) presented a model for energy management in office buildings. With the presupposition that building energy consumption is expected to increase up to 40% in the next 20 years, they claimed that electricity has the highest amount of energy consumption in buildings. Based on the results of this research, it was found that the strategies used for energy management in buildings vary according to the type of building and basically two strategy models can be adopted: residential and non-residential buildings. Chen et al. (2020) reviewed the factors affecting energy efficiency in buildings, and their findings indicated three main internal and external categories, including building features, equipment and technology, and occupant's behaviors. The findings showed that using only one of the above three factors will not provide the possibility of achieving effectiveness in energy management. Based on several review studies, it has been determined that the energy consumption reduction rate in smart buildings will be around 10-28% and 43-71% in heating, ventilation and air conditioning (HVAC) and lighting systems, respectively. Pallante et al. (2020) concluded that the control of some variables would save an average of 10-28% of energy costs. Economidou et al. (2020) reviewed 50 years of European Union (EU) energy efficiency policies for buildings. The analysis of economic and environmental aspects showed that the EU has been promoting public energy efficiency since the 1970s by focusing on buildings, policies and special programs. These strategies have been gradually strengthened to fulfill the

commitments of energy and climate policies and priorities. Considering the importance of the topic under discussion, the purpose of the present study was to design and present an environmental management model with an emphasis on optimal energy consumption in office buildings of District 5 Municipality of Tehran, Iran.

2. Material and methods

An integrated approach (including in-depth survey and semi-structured interviews with experts) was used to extract the management components affecting energy consumption in office buildings. To this end, a comprehensive review was conducted on various and valid national and international documents, reports, articles and projects. The most important approaches used in this sector were Rotterdam Energy Approach and Planning (REAP), Energy Information and Management System (EIMS) and Leadership in Energy and Environmental Design (LEED) (Khayatnezhad et al., 2023; Fataei, 2014). In addition, the experts helped us in the form of a semi-structured interview to complete the items and extract the components. In this regard, the coding method was used to determine the components, as well as the analytic hierarchy process (AHP) and Expert Choice software, version 2004 under Excel (Excel version MS Excel 2013) were used for pairwise comparison and prioritization of components (Fataei et al., 2013). After designing the conceptual model, it was time to validate this model. To achieve this purpose, a researcher-made questionnaire was designed and distributed among statistical samples. The data obtained from the questionnaires were analyzed using quantitative methods and statistical techniques and became the basis for the validation of the designed conceptual model.

The proposed conceptual model was validated with the help of experts from scientific and specialized centers, institutions and organizations related to the environment, who were recognized as experts in the field of energy consumption management and met all the inclusion criteria, including a) having at least a master's degree in environmental or energy management, and b) being a faculty member of a university, research institute, or scientific and educational center with at least 15 years of related work experience and at least 5 years of related management or planning and decision-making experience. Since the present research was conducted in a specific organization and determined area, the sampling was done based on purposive sampling method, and finally the sample size was estimated to be 32 experts.

Validity was determined by convergent validity whose criterion is that average variance extracted (AVE) should be greater than 0.5, which is computed by Equation (1) (Habibi and Afridi, 2022).

$$AVE = \frac{\sum \lambda_i^2}{\sum \lambda_i^2 + \sum \text{var}(\varepsilon_i)} \quad (1)$$

Where, λ stands for factor loading and ε for error variance. In this research, the reliability of the questionnaire was investigated using composite reliability (CR) and Cronbach's alpha coefficients. Unlike Cronbach's alpha, which implicitly assumes the same weight for each index, the CR relies

on the true factor loadings of each construct and provides a better measure of reliability. The CR should be more than 0.7 to indicate the internal stability of the structure (Fataei et al., 2013), whose coefficient is calculated as Equation (2):

$$CR = \frac{(\sum_{i=1}^n \lambda_i)^2}{(\sum_{i=1}^n \lambda_i)^2 + (\sum_{i=1}^n \delta_i)} \quad (2)$$

Where, λ stands for factor loading and δ for error variance. The final questionnaire was evaluated for validity by AVE and for reliability by CR and Cronbach’s alpha, the results of which indicated acceptable reliability and validity of the proposed questionnaire.

Adequacy of sample size was checked by Kaiser-Meyer-Olkin (KMO) and Bartlett’s tests. The data were analyzed by confirmatory factor analysis (CFA) and the goodness of final model fit was done by structural equation modeling (SEM).

3. Results

The integrated strategy was used to obtain management factors and components affecting energy consumption in the studied office buildings using REAP, EIMS and LEED because of their comprehensiveness, accuracy, up -to -date and widespread application worldwide. Accordingly, 25 components were extracted initially based on in-depth survey and interview with experts. Then, they were screened and categorized by a stepwise coding process. In the following, 10 components were finalized, which were placed in three separate categories (architecture and engineering, rules and regulations, behavioral patterns) according to the functional scope and nature (Table 1).

Next, the above ten components were prioritized using pairwise comparison, as shown in Fig. 1. Figs. 2, 3, and 4 compare the weight percent (w%) of selected components affecting energy management in office buildings. As can be seen, the highest w% belonged to the C4 component (26.8%), followed by the C9 (21.5%) and C2 (15.9%) components, respectively, and the lowest w% belonged to the C6 component (1.7%).

3.1 Goodness-of-fit of the proposed model

normality of data distribution was determined by Kolmogorov-Smirnov (K-S) test (H0: data distribution is normal, H1: data distribution is non-normal). The results of the K-S test (Table 2) showed that the distribution of all variables in the studied sample followed the normal distribution, because the significance level was more than 5% and the null hypothesis was not rejected. Therefore, one of the assumptions of the structural equation model was established, and the data had no severe skewness and kurtosis, and the distribution of variables was normal. According to the test results, the KMO value was 0.623, so the sample size was adequate for CFA and SEM tests.

3.2 Results of confirmatory factor analysis (CFA)

To confirm the integrated model, 10 components (subsets of three dimensions) were used in the questionnaire (Table 3). Based on the output of the software, the factor loadings of all components were higher than 0.4, indicating the appropriateness of the desired indicators. Model fit indices were used to make a decision regarding the confirmation or rejection of the measurement model. CFA seeks to confirm the goodness of fit of the model, or in other words, to confirm that the presented model is similar to the real model. The goodness of fit of the model was evaluated using indices including goodness of fit index (GFI), root mean square residual (RMR), Tucker-Lewis index (TLI), comparative fit index (CFI), incremental fit index (IFI), chi-square degree of freedom ratio (CMIN/DF) and root mean square error of approximation (RMSEA).

The GFI values for the integrated model were estimated to be 0.942 (for architecture and engineering), 0.941 (for behavioral patterns) and 0.901 (for rules and regulations), which were in the acceptable area due to being more than the standard value (0.9), as well as the RMR values were 0.079, 0.073 and 0.061, respectively, which were in the acceptable area due to being lower than the standard value (0.08). Moreover, the TLI values were 0.959, 0.929 and 0.901, the CFI values were 0.903, 0.949 and 0.899, and

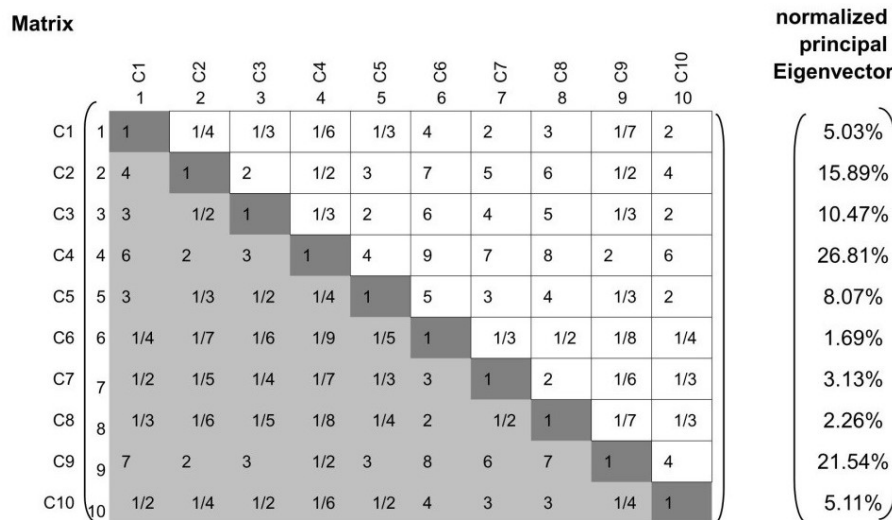


Figure 1. Pairwise comparison matrix of 10 selected components (average votes of 32 experts).

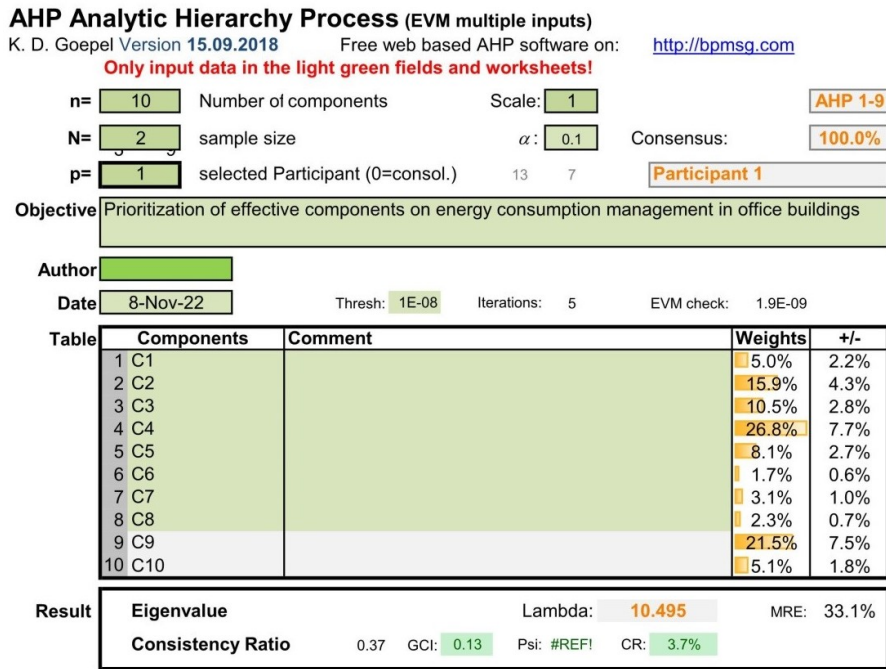


Figure 2. Comparison of the components affecting energy management in office buildings of Tehran municipality, Iran, based on the opinions of experts (n=32).

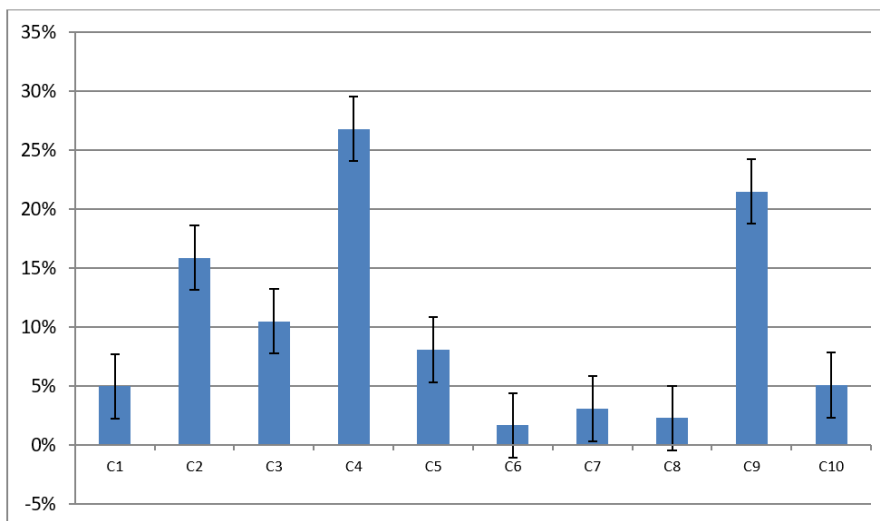


Figure 3. Comparison of the weight percent (w%) of selected components affecting energy management in office buildings of Tehran municipality, Iran, based on the opinions of experts (n=32).

the IFI values were 0.911, 0.953 and 0.919, respectively, which were in the acceptable area due to being more than the standard value (0.9). In addition, the CMIN/DF values were between 1 and 5, so it was in the acceptable area. The RMSEA value was also less than 0.08, so it was in the acceptable area. Therefore, considering that at least three indicators had values in the acceptable range, it could be claimed that the fit of the model was good and acceptable. In other words, the results of the model fit tests showed that the 10 proposed components could be candidates in the majority of the model components. The results showed that the dimensions "Architecture and engineering", "Behavioral patterns" and "Rules and reg-

ulations" explained 76.74%, 42.88% and 32.72% of the variance of the model, respectively. Hitt's strategic planning model was used to develop strategies (Javadi Nodeh et al., 2021). For this purpose, the Delphi panel was requested to provide effective strategies regarding the identification and weighting of the effective components on the energy management model. Finally, all the extracted strategies were categorized and again provided to the experts for final approval to obtain the final summary. The results are as described in Table 4. Fig. 5 shows the comparative diagram of the importance and position of strategies. As can be seen, strategy S3 was ranked first with a final weight of 4.16, followed by strategy

Table 1. Components extracted from the literature and interviews affecting energy consumption management.

functional dimensions	components		references	source of extraction	
	descriptions	abbreviation		literature	interview
architecture and engineering	applying smart building standards during design and construction	C1	<ul style="list-style-type: none"> • Lu et al. (2018) • Teng et al. (2018) • Tavares et al. (2019) • Energy and Design (2016) • Lee et al. (2014) 	◆	◆
	regularly checking and fixing defects of facilities and equipment	C2	<ul style="list-style-type: none"> • GEF, 2015 • Energy and Design (2016) • Wang et al., 2017 • Hang (2010) 	◆	◆
	achieving energy-related environmental standards	C3	<ul style="list-style-type: none"> • Energy and Design (2016) • Zhao et al. (2011) 	◆	◆
	using appropriate technology for manufacture and providing and using low-consumption supplies and equipment	C4	<ul style="list-style-type: none"> • Salvia et al. (2021) • Palant et al, 2020 • Economidouk et al. (2020) • Energy and Design (2016) • Tillie et al. (2009) • Zhang et al., 2018 • Hong et al., 2018 • Ochoa et al. (2012) 	◆	◆
rules and regulations	adopting renewable and green energy sources	C5	<ul style="list-style-type: none"> • Economidouk et al. (2020) • Energy and Design (2016) 	◆	◆
	implementing green tax policy	C6	<ul style="list-style-type: none"> • Tillie et al. (2009) • Council (2014) 		◆
	applying incentive/punishment mechanism	C7	<ul style="list-style-type: none"> • Li et al. (2014) 	◆	◆
	planning and establishing rules and regulations	C8	<ul style="list-style-type: none"> • Salvia et al. (2021) • Sandmo (2006) • Shadram et al. (2016) • Wang et al. (2019) 	◆	◆
behavioral patterns	saving cooling and heating energy	C9	<ul style="list-style-type: none"> • Tillie et al. (2009) • Edmund and Brown (2015) • Malacam et al., 2016 • LEED, 2002 	◆	◆
	improving the motivations and behavioral empowerment of users and consumers	C10	<ul style="list-style-type: none"> • Chen et al. (2020) • Tillie et al. (2009) • Rice (2006) • Calero et al. (2018) • Nilsson et al. (2018) 	◆	◆

S8 (4.13). Strategy S5 was the last priority (3.156).

3.3 The results of the structural equation modeling (SEM)

After ensuring the appropriateness of the model fit, the structural equation model was drawn following the research model based on the latest changes in confirmatory factor analysis. Due to the appropriateness of the model fit, there was no need to remove the markers in the model and also draw the covariance between the errors. Considering the purpose of implementing structural equations, which is to

estimate the relationships between variables, Table 5 reports the regression values of all path estimates between model variables.

Based on the results of structural equations, the relationship between the two variables "solution" and "main phenomenon" was significant, so that the coefficient of "Architecture and engineering solutions" path to energy management was 0.81, indicating a positive relationship between these two variables. It meant that if the architecture and engineering sector increased by one unit (on the condition of keeping other factors constant), energy management would

Table 2. Results of Kolmogorov -Smirnov (K-S) test.

components	significance level	test results
C1	0.079	normal
C2	0.065	normal
C3	0.113	normal
C4	0.425	normal
C5	0.098	normal
C6	0.102	normal
C7	0.053	normal
C8	0.069	normal
C9	0.107	normal
C10	0.221	normal

Table 3. Fit indices to confirm the components of the integrated model.

type of index	absolute fit indices (AFI)		incremental fit indices (IFI)			parsimonious fit indices (PFI)	
	RMR	GFI	TLI	CFI	IFI	RMSEA	CMIN/DF
standard values	0.08<	>0.9	>0.9	>0.9	>0.9	0.08<	1-5
architecture and engineering	0.079	0.942	0.959	0.903	0.911	0.043	3.837
behavioral patterns	0.073	0.941	0.929	0.949	0.953	0.076	2.144
rules and regulations	0.061	0.901	0.901	0.899	0.919	0.047	1.636

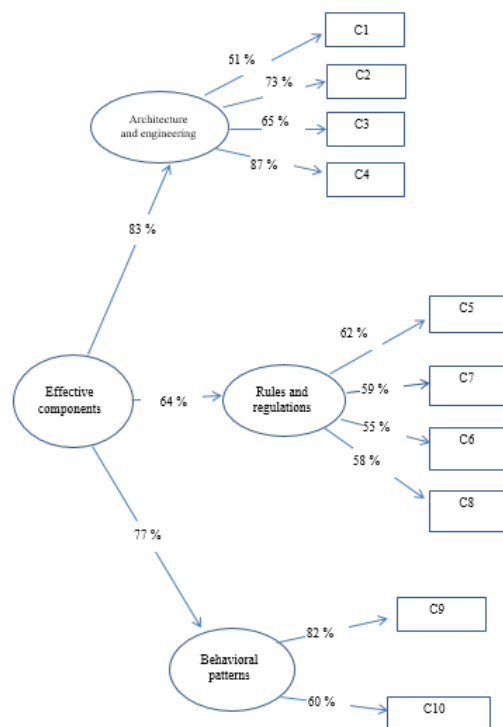


Figure 4. Measurement model of selected components affecting energy management in office buildings of Tehran municipality, Iran.

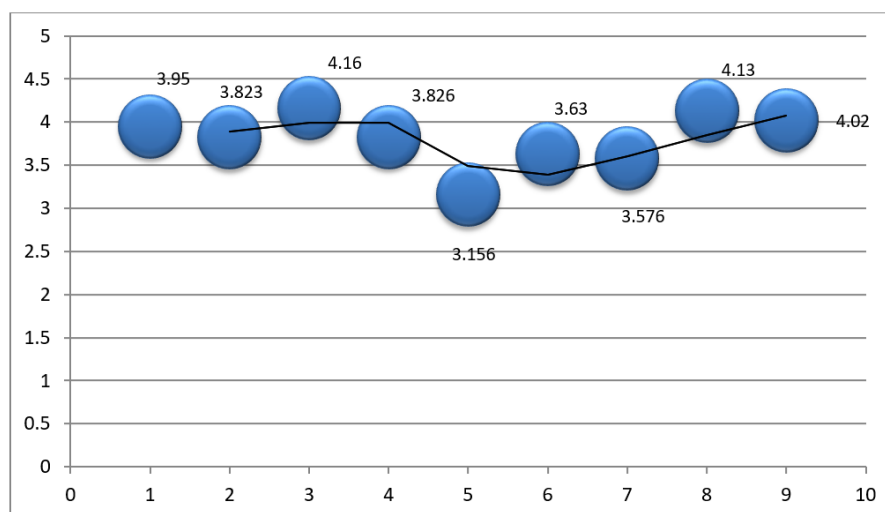
Table 4. Strategies extracted from the Delphi panel and data quality assessment.

code	strategies	data quality indices					final weight
		DConf	DC	DU	DCon	DCom	
S1	strengthening the national environmental policy system in the field of energy	4.89	3.60	4.11	3.35	3.80	3.95
S2	placing and designing appropriate office buildings	4.73	3.52	4.03	3.11	3.72	3.823
S3	strengthening the infrastructure and equipment in the field of energy consumption optimization	4.83	3.91	4.07	3.90	4.11	4.16
S4	emphasizing the participation of employees and managers in energy consumption optimization	4.32	3.46	3.76	3.93	3.66	3.826
S5	using green tax and incentive solutions in energy consumption	3.51	3.31	2.11	3.34	3.51	3.156
S6	empowering employees regarding the environment	4.12	3.24	3.44	3.91	3.44	3.63
S7	improving the insight and knowledge of managers towards the environment	4.75	3.00	3.15	3.83	3.15	3.576
S8	allocating financial resources to use clean energy sources	4.66	3.79	3.99	4.22	3.99	4.13
S9	developing aspects of engineering in the field of environment and energy	4.52	3.82	4.02	3.76	4.02	4.02

DConf: Data, Conformity, **DC:** Data Currency, **DU:** Data Uniqueness, **DCon:** Data Consistency, **DCom:** Data Completeness.

Table 5. Regression values of path estimation between model variables.

paths	estimate
architecture and engineering solutions → the main phenomenon (energy management)	0.81
rule and regulation solutions → the main phenomenon (energy management)	0.68
behavioral pattern solutions → main phenomenon (energy management)	0.77
the main phenomenon → approach	0.88

**Figure 5.** The final weight of strategies extracted from research findings.

increase by 0.81 units. The coefficient of "Rule and regulation solutions" path to the main phenomenon (energy management) showed a positive relationship between these two variables. It meant that if there was an increase of one unit in the regulations and laws section (on the condition of keeping other factors constant), energy management would increase by 0.68 units. The coefficient of "Behavioral pattern solutions" path to the main phenomenon showed a positive relationship between these two variables. It meant that if the behavioral patterns section increased by one unit (on the condition of keeping other factors constant), energy management would increase by 0.77 units. Finally, the coefficient of the path "main phenomenon" to "approaches" showed that for one-unit increase in the main phenomenon variable, 0.88-unit increase in approaches would occur.

4. Discussion

The findings of our research were consistent with the results of previous researches (Hesami, 2020; Mohrami et al., 2016), because these researches also emphasized the necessity and role of reducing energy consumption.

The factors affecting the reduction of energy consumption in office buildings can be considered in three dimensions, including (a) architecture and engineering, (b) rules and regulations, and (c) behavioral patterns. A total of 10 components related to the factors affecting energy consumption management in office buildings were extracted in our study. In this regard, Calero et al. (2018) reported seven effective components. The highest and lowest weight percentages were related to C4 ("Using appropriate technology for manufacture and providing and using low-consumption supplies and equipment", 26.8%) and C6 ("Implementing green tax policy" 1.7%) components, respectively.

All data had a normal distribution; Considering the value of KMO index which was equal to 0.623, the sample size was sufficient for confirmatory factor analysis and structural equation modeling. As mentioned earlier, since at least three indicators (GFI, RMR, TLI, CFI, IFI, CMIN/DF and RMSEA) showed values in the acceptable range, it could be claimed that the fit of the model was good and acceptable. In other words, the results of the model fit tests underlined that the 10 proposed components could be candidates in most of the model components. According to the results, the main functional dimensions of "Architecture and engineering", "Behavioral patterns" and "Rules and regulations" could explain 76.74%, 42.88% and 32.72% of the variance of the model, respectively.

These results were in line with the findings of Nikghadam Hojjati et al. (2012) because they also expressed the importance of smart buildings and the application of engineering aspects to reduce energy consumption. Similarly, according to Ghazi and Naderi (2011), the use of energy management system reduces energy consumption and prevents the wastage of various resources used in cooling and heating sectors.

Regarding the strategies, the results showed that the strategy "Strengthening the infrastructure and equipment in the field of energy consumption optimization" with a final weight of 4.16 was the first priority, and the strategy "Allocating

financial resources to use clean energy sources" was ranked next (4.13). The strategy "Using green tax and incentive solutions in energy consumption" was the last priority (3.156). Some of the strategies presented in this research were consistent with the study of Verij Kazemi and Verij Kazemi (2017); they also came to the conclusion that planning is the most important key in energy management, and the use of advanced technology and high investment but without management can lead to wasting the organization's resources.

5. Conclusion

According to the findings of the present research, the components affecting the environmental management of the office buildings of Tehran municipality in Iran from the point of view of saving energy consumption were determined to be 10 components included in three functional dimensions. It is hoped that the use of solutions derived from the developed strategies can be positive in energy management. The research results made the following suggestions:

- Implementing effective laws and regulations related to the field of energy consumption for office buildings;
- Using environmental management solutions with an emphasis on energy management in the office building (study site) using a movable smart canopy, installing photovoltaic panels and optimal combined mode;
- Periodically and regularly monitoring government buildings from the point of view of energy management;
- Observing environmental considerations when designing and placing government office buildings;
- Using the principles of engineering in design and construction;
- Applying modern technology regarding energy management;
- Improving managers' insight and knowledge about energy and environmental management and holding related training courses;
- Granting certificate of occupancy to office buildings subject to obtaining and implementing energy standards;
- Promoting appropriate training, interest and motivation among users regarding energy management in office buildings in order to implement environmental programs based on energy management with the participation of employees with appropriate efficiency.

Funding

No funding was received to assist with conducting this study and the preparation of this manuscript.

Authors Contributions

All authors have contributed equally to prepare the paper.

Availability of Data and Materials

The data that support the findings of this study are available from the corresponding author upon

reasonable request.

Conflict of Interests

The authors declare that they have no known competing financial interests or personal relationships that could have appeared to influence the work reported in this paper.

Open Access

This article is licensed under a Creative Commons Attribution 4.0 International License, which permits use, sharing, adaptation, distribution and reproduction in any medium or format, as long as you give appropriate credit to the original author(s) and the source, provide a link to the Creative Commons license, and indicate if changes were made. The images or other third party material in this article are included in the article's Creative Commons license, unless indicated otherwise in a credit line to the material. If material is not included in the article's Creative Commons license and your intended use is not permitted by statutory regulation or exceeds the permitted use, you will need to obtain permission directly from the OICCPress publisher. To view a copy of this license, visit <https://creativecommons.org/licenses/by/4.0>.

References

- Bahmanpour H, Mafi A, Dorbeiki M, Salajegheh B (2021) Climate change; educational package of environmental literacy; Special for educators and facilitators. *Iranian Department of Environment, Tehran* 1st Ed
- Bahrami H, Davoudi T (2004) Energy Management with Smart Switchboard. *Iranian Journal of Energy* 8 (18): 30–42.
- Calero M, Alameda-Hernandez E, Fernández-Serrano M, Ronda A, Martín-Lara M Ángeles (2018) Energy consumption reduction proposals for thermal systems in residential buildings. *Energy and Buildings* 175:121–130.
- Chen S, Zhang G, Xia X, Setaung S, Shi L (2020) A review of internal and external influencing factors on energy efficiency design of buildings. *Energy and Buildings*, 216.
- Council NZGBC: New Zealand Green Building (2014) Reducing energy consumption in existing buildings. www.nzgbc.org.nz
- Darabi MH (2022) Optimizing the energy consumption of buildings using building information modeling and the feasibility of using renewable energy in energy supply (a case study in Tehran, Iran). *Dissertation, Faculty of Engineering, Kharazmi University, Tehran, Iran*
- Economidouk AM, Todeschi V, Bertoldi P, D'Agostino D, Zangheri P, Castellazzi L (2020) Review of 50 years of EU energy efficiency policies for building. *Energy and Buildings* 225:110322.
- Edmund G, Brown Jr (2015) Reducing energy use in state buildings. <https://www.ca.gov/archive/gov39/2015/10/07/news19153/index.html>
- Energy LEED: Leadership in, Design Environmental (2016) Better buildings are our legacy. www.usgbc.org/lee
- Fataei E (2014) Feasibility study of border industrial town using AHP and TOPSIS. *Geography and Development* 12 (37): 181–194. <https://doi.org/10.22111/gdij.2015.1827>
- Fataei E, Alsheikh A (2009) Locating solid waste landfills using GIS and AHP. *Environmental Science* 6:145–158.
- Fataei E, Torabian A, Hosseinzadeh Kalkhoran M, Alighadri M, Hosseinzadeh S (2013) Selection of optimum municipal wastewater treatment process using AHP (Case study: Ardebil, Tabriz, and Uremia). *J. Health* 4 (3): 260–272.
- Fazli AR, Heydari S (2013) Energy efficiency in residential areas of Tehran using Rotterdam Energy Approach Planning (REAP). *Journal of Energy Policy and Planning Research* 1 (3): 83–96. <http://eprjournal.ir/article-1-44-fa.html>
- Ghafari Jabari S, Ghafari Jabari S, Saleh E (2013) Review strategies for improving the design and construction of settlements in Tehran. *Journal of Energy Policy and Planning Research* 1 (1): 115–132.
- Ghazi S, Naderi A (2011) The role of Energy Building Management system (EBMS) in optimization of energy consumption in the building. *Human and Environment* 9 (3): 49–52.
- Habibi A, Afridi S (2022) Multi-criteria decision making (definite and fuzzy). *Narvan Danesh Press, Tehran, Iran*
- Hang Y (2010) Building Management System to support building renovation. *Journal of The Boolean: Snapshots of Doctoral Research at University College Cork*, 164–169. <https://doi.org/10.33178/boolean.2010.37>
- Hesami Z (2020) Effectiveness of the implementation of the resolution of the reform of the energy consumption pattern and resources in buildings (Case study: Tehran Municipality buildings). *Urban Economy* 9 (1): 48–53.
- Javadi Nodeh M, Shahcheraghi A, Andalib A (2021) An evaluation of ecological solutions based on energy efficiency in the vernacular architecture of Ardabil. *Anthropogenic Pollution* 5 (1): 31–40. <https://doi.org/10.22034/ap.2021.1921696.1087>

- Khayatnezhad M, Fataei E, Imani AA (2023) Integrated modeling of food-water-energy nexus for maximizing water productivity. *Water Supply* 23 (3): 1362–1374.
- Lee B, Kwon S, Lee A (2014) Joint energy management system of electric supply and demand in houses and buildings. *IEEE Transactions on Power Systems* 29:2804–2812.
- Li YP, Wang YD, Wu DW, Chen HS, Sui J, Zhang XJ (2014) Dynamic electricity demand prediction for UK households. *Energy Procedia* 61:230–233.
- Lu W, Chen K, Xue F, Pan W (2018) Searching for an optimal level of prefabrication in construction: An analytical framework. *Journal of Cleaner Production* 201:236–245.
- Mariano-Hernandez D, Hernandez-Calejo L, Zorita-Lamadrid A, Duque-Perez O, Santos-Garcia F (2020) A review of strategies for building energy management system: Model predictive control, demand side management, optimization, and fault detect & diagnosis. *Journal of Building Engineering* 33:10169.
- Mohrami H, Zulfiqarzadeh A, Aftab Qarabagh H (2016) Smart buildings and energy efficiency and safety in sustainable development. *5th Conference on Emerging Trends in Energy Conservation, University of Tehran, Tehran, Iran*, <https://civilica.com/doc/458597>
- Nami D, Fataei E, Nejaei A, Zaeimdar M (2017) Evaluation of environmental potential in Parsabad, Moghan for urban development using GIS and AHP. *Journal of Environmental Science and Technology* 19 (5): 475–486. <https://doi.org/10.22034/jest.2017.11350>
- Nikghadam Hojjati S, Soleimani Roozbahani F, Pourasad H (2012) Smart buildings as an efficient choice in energy efficiency. *2nd energy management conference, Tehran*, <https://civilica.com/doc/181682>
- Nilsson SE, Andersson L, Salva D (2018) Contact Lens Wear in Dry Environments *ACTA Ophthalmologica* 64:221–225.
- Ochoa CE, Aries MBC, Loenen EJ van, Hensen JLM (2012) Considerations on design optimization criteria for windows providing low energy consumption and high visual comfort. *Appl Energy* 95:238–245.
- Pallante A, Adacher L, Botticelli M, Pizzuti S, Comodi G, Monteriu A (2020) Decision support methodologies and day-ahead optimization for smart building energy management in a dynamic pricing scenario. *Energy and Buildings* 216:109963. <https://doi.org/10.1016/j.enbuild.2020.109963>
- Rice G (2006) Pro- environmental behavior in Egypt: Is there a role for Islamic environmental ethics? *65:373–390*.
- Salvia M, Simoes SG, Herrando M, Cavar M, Cosmi G (2021) Improving policy making and strategic planning competencies of public authorities in the energy management of municipal public buildings: The PrioritEE toolbox and its application in five mediterranean areas. *Renewable and Sustainable Energy Reviews* 135:110106.
- Samavati E (2016) Energy management of smart building with renewable energy sources supplying. *Journal of Renewable and New Energy* 3 (1): 45–50.
- Sandmo A (2006) Book: The public economics of the environment *Oxford University Press*
- Shabanzadeh H, Javan A (2003) Book: Energy efficiency standards and labels, guidebook for lighting devices and equipment. *Tehran University Press, Tehran*
- Shadram F, Johansson TD, Lu W, Schade J, Olofsson T (2016) An integrated BIM-based framework for minimizing embodied energy during building design. *Energy Build* 128:592–604.
- Tatar M, Marafet M (2013) New solutions to reduce energy consumption in buildings through modification of the outer shell. *Mechanical Engineering* 22 (4): 32–39.
- Tavares V, Lacerda N, Freire F (2019) Embodied energy and greenhouse gas emissions analysis of a prefabricated modular house: The “Moby” case study. *Journal of Cleaner Production* 212:1044–1053.
- Teng Y, Li K, Pan W, Ng T (2018) Reducing building life cycle carbon emissions through prefabrication: Evidence from and gaps in empirical studies. *Building and Environment* 132:125–136.
- Tillie N, Dobbelsteen A, Doepel D, Jager W, Joubert M, Mayenburg D (2009) Towards CO₂ neutral urban planning: Presenting the rotterdam energy approach and planning (REAP) *Journal of Green Building* 4 (3): 103–112.
- Translation of the Document of Paris Sustainable Development Goals. (2019)
- Verij Kazemi M, Verij Kazemi R (2017) Providing operational solutions to optimize energy consumption and energy management in Iran’s office and residential buildings. *2nd National Conference on Building the Future, Tehran*
- Wang W, Hong T, Li N, Wang RQ, Chen J (2019) Linking energy-cyber-physical systems with occupancy prediction and interpretation through WiFi probe-based ensemble classification. *Appl. Energy* 236:55–69.
- Zhao M, Gao G, Cheng Y (2011) Applicability analysis of passive energysaving strategy in chongqing. *International Conference on Electronics, Communications and Control (ICECC)*, 4179–4183.